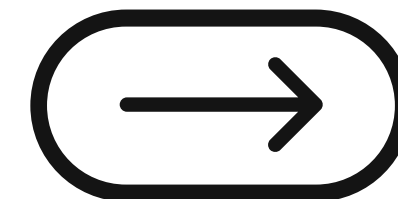




Hiring Design Engineer

4.25 lakhs per annum

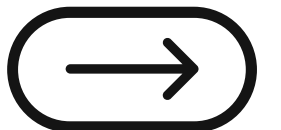


About us

Worksbot Applications is a best solutions and development company specializing in Artificial Intelligence (AI) & Machine Learning technologies. Worksbot was created to leverage technology to empower creative minds all over the world.

Worksbot offers consulting services for various stages of virtual product development. They remain as the leading provider of product design and development solutions (CAE, CAD, and Engineering Design) along with FEA software tools. Worksbot proudly serves the automotive, aerospace, energy/power, electronic packaging, and biomedical industries.

Worksbot's engineering services team specializes in all of the major attributes of CAE structural analysis, such as; crash and safety, noise, vibration and harshness, durability, vehicle dynamics, and real-time issues where loading and stresses/deflections are involved. The team has experience with numerous full vehicle programs including passenger cars, buses, and trucks. Along with managing project costs, timing forecasts, conceptual design, CAE analysis, manufacturing, test, validation, homologation, and product release.



Partner and Design Tool we use





Interview Process

Round 1

Online Technical Exam

Round 2

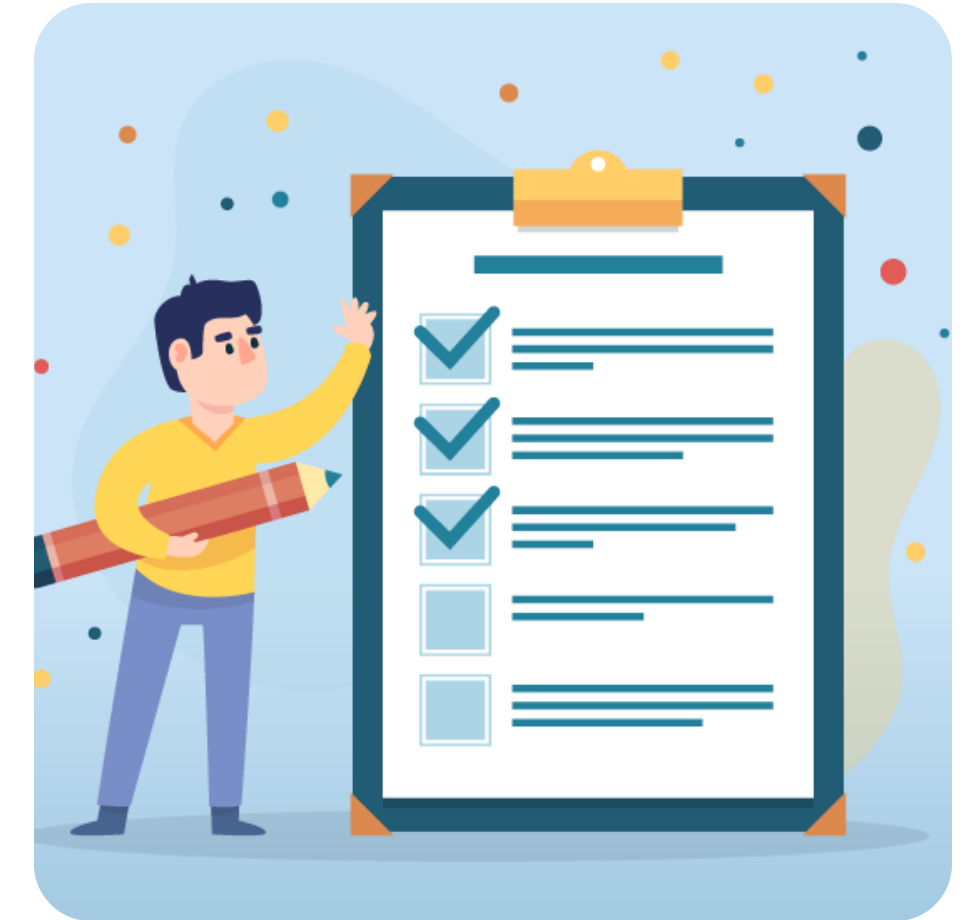
Virtual Technical Group Discussion

Round 3

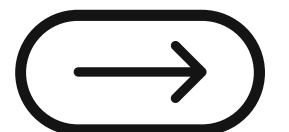
Virtual HR Face to Face Round

Eligibility & Required Skills

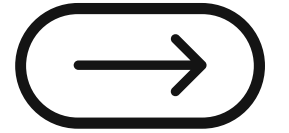
- BE/BTECH - Mechanical, Automobile, Mechatronics.
- Good communication skills (both written and verbal)
- Creative thinker, Vibrant, good team player
- Excellent ability to read and understand engineering drawings/documents/reports
- Highly committed and quick learner.
- Knowledge of engineering product and design principles.
- Knowledge of design of Valves or related piping equipment's.
- Knowledge of pneumatic and electro-pneumatic control instruments



4.25 Lakhs PA



Roles and Responsibilities



Designing service provider of automobile, aerospace, healthcare, Industries.

- Works on new product development (NPD) projects, VAVE projects, support development efforts for new features and status updates to project stake holders
- Generate the mechanical configuration release for sold-order machines
- Support compliance to configuration management and ISO design standards
- Provide technical support to manufacturing, field service, outsourcing vendors and purchasing
- Maintaining 3D models and 2D engineering documentation and bills of materials. Should have exposure to EPDM, PLM and ERP or MRP systems.
- Assists with Engineering Change Order (ECO) procedure. Reviews & implements Engineering Change Requests (ECRs).
- Conducts root-cause analysis and Failure Mode Effects Analysis (FMEA) studies.
- Conducts stress analysis and thermodynamics studies.
- Helps develop user operational and service procedures and associated instruction manuals.
- Develops assembly procedures which provides guidance in the manufacturing of new products.



To Know more

connect with our experience professionals.

Workspot Applications Private Limited
Plot 26A, Carevoyant campus, 4th Main Road,
Sipcot IT Park, Siruseri, Chennai - 603103

www.workspot.com

hrd@workspot.com

914467414054